



M/V «Glacier»



The vessel is fully grating fitted and is built for a high flexibility for shipment of chilled/frozen cargo of both palletized and loose configuration.

The vessel's high square meter space allows for maximum utilization of vessels cubic capacity.

The derricks and the hatch design allow for fast and efficient cargo operations including transhipment operations.

Cargo Capacity

Comp.	Cubic ft	SQM	Min. height
HC 1	3.706	47	2,20
HC 2	3.711	47	2,20
HC 3	3.716	47	2,20
HC 4	3.711	47	2,20
1A	20.342	222	2,20
2A	23.501	268	2,20
3A	24.066	281	2,20
4A	23.986	279	2,20
1B	16.717	176	2,20
2B	22.540	285	2,20
3B	24.366	285	2,20
4B	23.553	267	2,20
1C	13.412	148	2,20
2C	19.368	208	2,20
3C	23.298	262	2,20
4C	20.265	209	2,20
Total	270.258	3.077	

Tonnage/capacities

DWT	6.487 tons
GT	5.136 tons
NT	3.149 tons
Cubic	270.258 cbft
Sqm u. deck	3.077 Sqm

Main particulars

Built	Japan 1991
LOA	115,00 meters
LPP	105,50 meters
Beam	17,80 meters
Draft	7,765 meters
Main E.	6.800 bhp
Speed	17,5 knots
Bowthruster	500 bhp

Tank capacities

Ballast	275 cbm
FW	248 cbm
IFO	983 cbm
MDO	138 cbm

Hatches

All hatches to all holds/compartments have free opening of 6,20 m x 7,40 m with exception of hatch to compartment 1C where opening is 6,00 m x 6,00 m.

Derricks

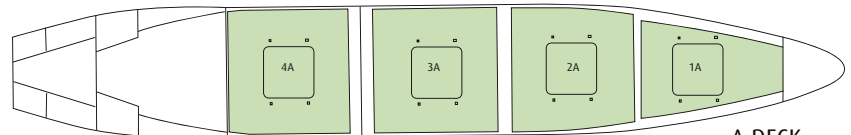
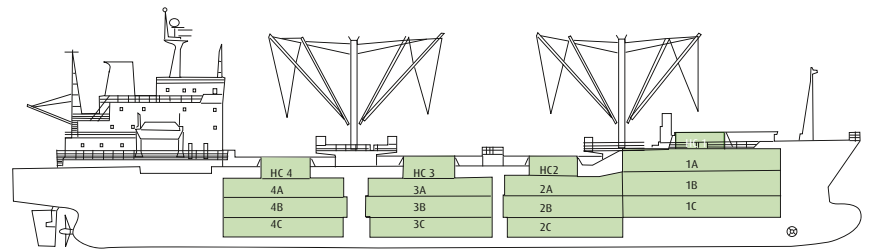
8 x 5 mt derricks (3,5 mt in union purchase).

Temperatures

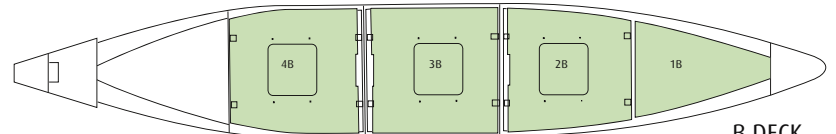
Designed for cooling of 16 cargospaces divided into 9 separate cooling sections. Sufficient compressor capacity for keeping -30 to +15 degrees Celcius.

Ventilation

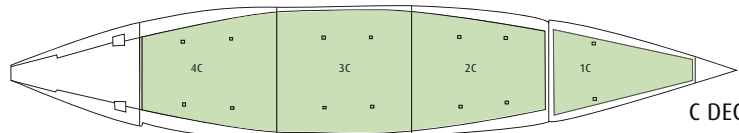
Air changes per hour: 90
Air renewal per hour: 4



A DECK



B DECK



C DECK