



## Green Reefers

www.green.no

M/V «Green Brazil»  
 M/V «Green Chile»  
 M/V «Green Costa Rica»  
 M/V «Green Guatemala»  
 M/V «Green Honduras»  
 M/V «Green Italia»



The vessel is fully grating fitted and is built for a high flexibility for shipment of chilled/frozen cargo of both palletized and loose configuration.

The vessel's high square meter space allows for maximum utilization of vessels cubic capacity.

The cranes and the hatch design allow for fast and efficient cargo operations. Vessels hatch cover design allows for full weather protection during cargo operations.

The ships are also self sustained with crane capable of lifting fully loaded containers.

### Cargo Capacity

Comp.	Cubic ft	SQM	Height
1 A	38.423	441	2,20
2 A	39.306	454	2,20
3 A	38.883	450	2,20
1 B	30.442	356	2,20
2 B	37.823	453	2,20
3 B	38.070	458	2,20
1 C	21.966	263	2,20
2 C	33.338	422	2,20
3 C	30.725	389	2,20
1 D	10.771	137	2,20
2 D	28.147	338	2,20
3 D	27.829	334	2,20
<b>Total</b>	<b>375.723</b>	<b>4.495</b>	

### Container Capacity

	TEU	or FEU
Weatherdeck	89	45

Equipped with 29 reefer plugs.

### Tonnage/capacities

Cubic	375.723 cbft
Sqm u. deck	4.495 Sqm
DWAT	7.721 mt
GT	7.743
NT	3.726

### Main particulars

Built	1991 - 1992
Loa	131,25 m
Beam	19,60 m
Summer draught	8,87 m
Main E.	11.012 bhp

### Tank capacity

1.086 mt IFO 380 RMG 35
126 mt MDO DMB

### Holds/Hatches/Compartments

3/3/12  
 All hatches to all holds/compartments have free opening of minimum 8,1 m x 4,7 m

### Ventilation/temperatures

Air changes per hour: 90  
 Air renewal per hour: 2,4  
 7 separate cooling sections, with sufficient compressor capacity for keeping -30 to +15 degrees Celsius.

### Cranes

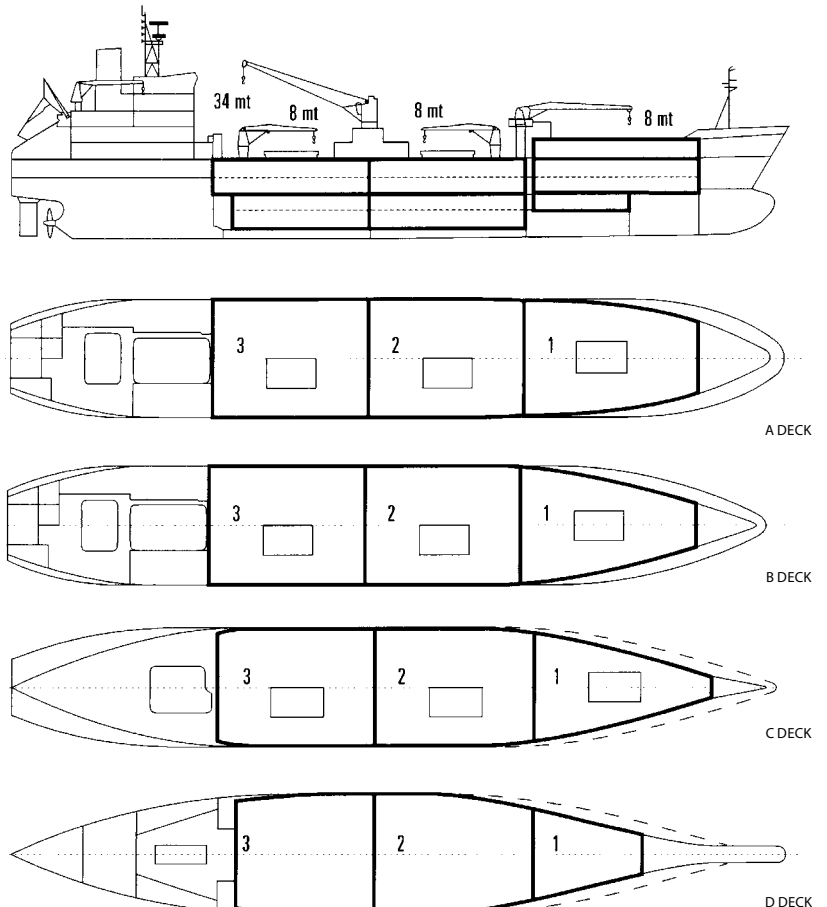
Cranes:	1 x 17/34 mt
Pallet cranes:	3 x 8 mt

### Speed and Consumption

Speed banana laden	abt. 19,7 knots
Consumption main	abt. 29,5 mt IFO 380 RMG 35
Consumption aux	abt. 2,5-4,5 mt IFO 380 RMG 35

### Additional features

CA pre-piped  
 Weather protection for hatches  
 Vessel equipped with pallet cages



Vessels particulars believed to be correct but not guaranteed